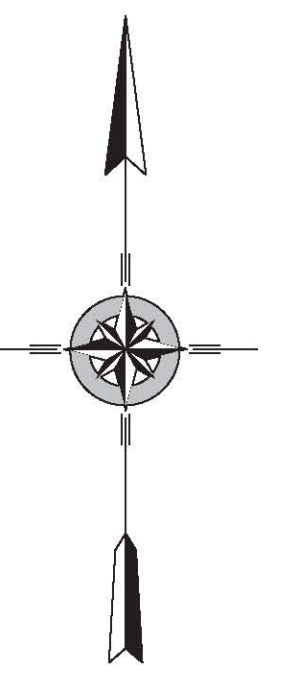
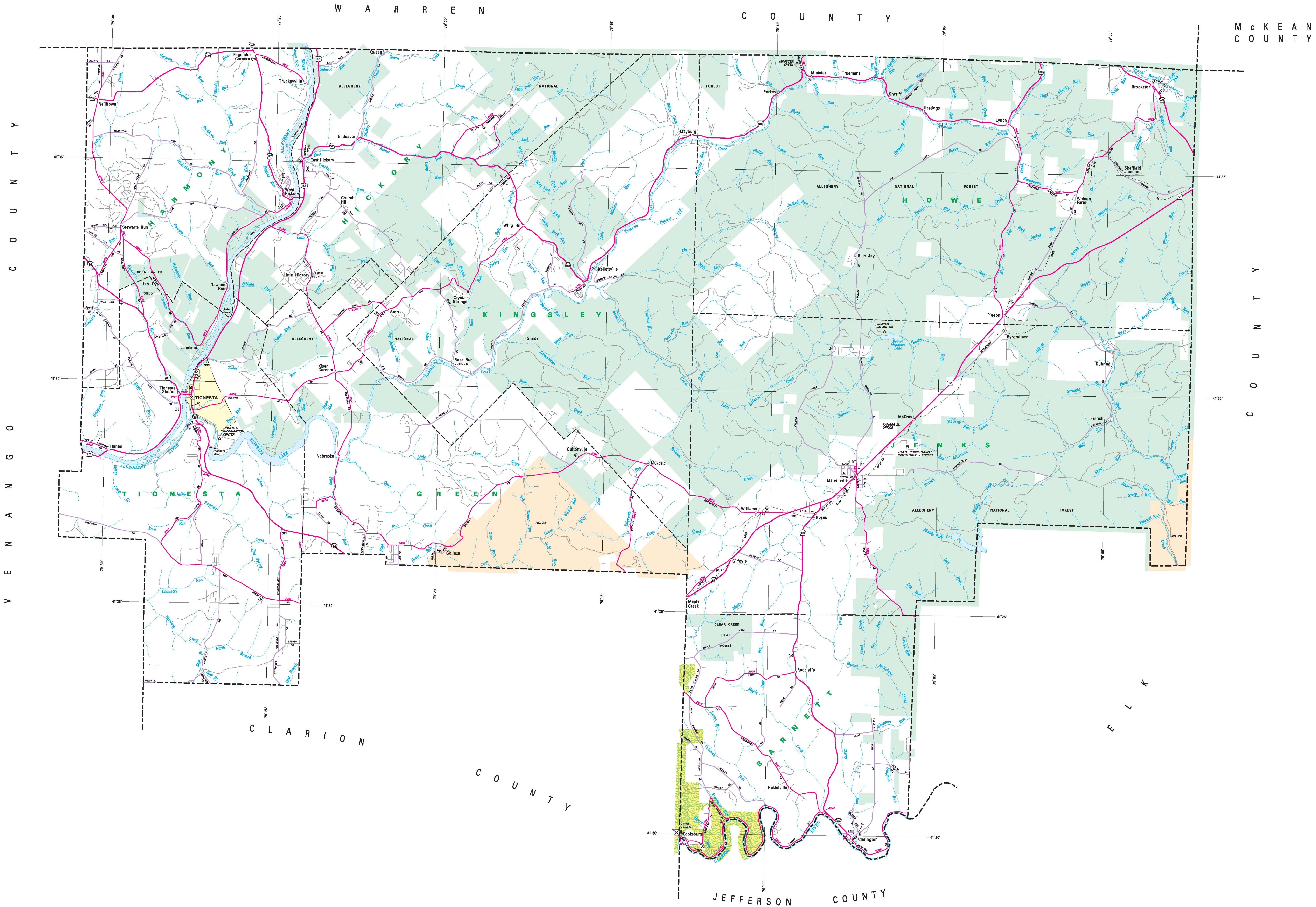
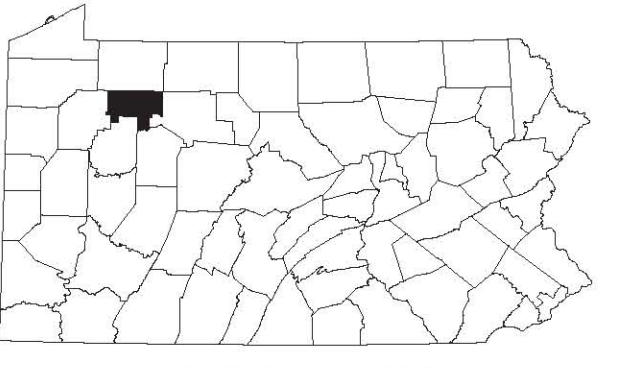
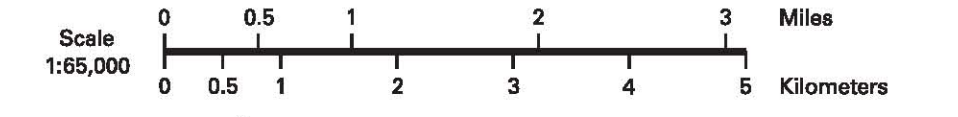


- LEGEND**
- FULLY CONTROLLED ACCESS HIGHWAY
 - TRUNK HIGHWAY
 - REMAINING STATE ROAD AND EQUIV.
 - STATE MAINTAINED BRIDGE
 - UNIMPROVED ROAD
 - UNIMPROVED ROAD (PENDING IMPROVEMENT)
 - STATE ROAD
 - STATE HIGHWAY NUMBER
 - STATE TRAFFIC ROUTE
 - UNITED STATES TRAFFIC ROUTE
 - PENNSYLVANIA TRAFFIC ROUTE
 - MAINTAINED BRIDGE
 - RAILROAD TRACK
 - STATE LINE
 - COUNTY LINE
 - UNINCORPORATED CITY
 - UNINCORPORATED BOROUGH
 - STATE CAPITAL
 - COUNTY SEAT
 - CITY BOUNDARY
 - CITY OF UNIVERSITY
 - STATE POLICE FACILITY
 - STATE
 - STATE ADMINISTERED HISTORIC PROPERTY
 - FEDERAL STATE RESERVATION
 - PRIVATE FACILITY
 - PORT OF STATE
 - HORSE RACE TRACK
 - RESERVE
 - RESERVE AND COMPOST FACILITY
 - WILDLIFE SANCTUARY AND COMPOST FACILITY
 - STATE FISH HATCHERY
 - STATE FOREST TRAINING AREA
 - STATE FOREST POND AREA
 - FEDERAL RECREATION SITE
 - STATE PARK LAND / ACQUISITIONS
 - STATE GAME LAND AND NUMBER
 - STATE AND FEDERAL FOREST LAND
 - FEDERAL PARK / RECREATION LAND
 - FEDERAL RESERVATION



2004
GENERAL HIGHWAY MAP
FOREST COUNTY
PENNSYLVANIA

PREPARED BY THE
 PENNSYLVANIA DEPARTMENT OF TRANSPORTATION
 BUREAU OF PLANNING AND RESEARCH
 GEOGRAPHIC INFORMATION DIVISION
 IN COOPERATION WITH THE
 U.S. DEPARTMENT OF TRANSPORTATION
 FEDERAL HIGHWAY ADMINISTRATION



POPULATION OF COUNTY 2000 Census 488
 AREA OF COUNTY (SQ. MI.) 433
 (SQ. MILE) 1,096
 POLYCONIC PROJECTION - NAD 83 DATUM

COPIES OF THIS MAP ARE AVAILABLE AT NOMINAL COST
 CONTACT:
 PENNSYLVANIA DEPARTMENT OF TRANSPORTATION
 BUREAU OF PLANNING AND RESEARCH
 GEOGRAPHIC INFORMATION DIVISION
 HARRISBURG, PENNSYLVANIA 17105 - 2008
 TELEPHONE (717) 787-6746

USERS NOTING ERRORS OR OMISSIONS ON THIS MAP
 ARE URGED TO REPORT THEM TO:
 PENNSYLVANIA DEPARTMENT OF TRANSPORTATION
 BUREAU OF PLANNING AND RESEARCH
 GEOGRAPHIC INFORMATION DIVISION
 P.O. BOX 2008
 HARRISBURG, PENNSYLVANIA 17105 - 2008
 E-MAIL: mapcorrections@pa.gov