

LEGEND

FARM UNITS, DWELLINGS, ETC.

FARM UNIT (HOUSE NUMBER OR NAME)
 DWELLING (HOUSE NUMBER OR NAME)
 ROW OR GROUP OF DWELLINGS
 CORNER DWELLING AND STORE
 DWELLING AND POST OFFICE
 DWELLING, BUSINESS AND POST OFFICE
 DWELLING, BUSINESS AND FILLING STATION
 DWELLING, FILLING STATION AND POST OFFICE
 DWELLING, BUSINESS, FILLING STATION AND POST OFFICE
 TENANT HOUSE
 BARRACKS OR DORMITORIES
 RECREATIONAL OR SUMMER COLONY DWELLING
 SEASONAL DWELLINGS CLOSELY SPACED
 HOTEL OR INN
 CHURCH OR OTHER RELIGIOUS INSTITUTION
 CHURCH AND SCHOOL (SAME SITE)
 CHURCH WITH CEMETERY ADJACENT
 FARM OR HOME AND REST HOME
 HOSPITAL
 TOLL HOUSE
 WATER STORAGE FOR FIRE PROTECTION
 GROUP OF MIXED CULTURAL FEATURES

INDUSTRIAL

STORE OR SMALL BUSINESS ESTABLISHMENT
 BUSINESS AND FILLING STATION
 BUSINESS, FILLING STATION AND POST OFFICE
 FACTORY OR INDUSTRIAL PLANT
 SAWMILL
 MINE, SHAFT OR DRIFT
 OIL OR GAS WELL
 OIL TANK
 GAS TANK
 FILLING STATION (NOT CONNECTED WITH OTHER BUSINESS)
 PUMPING STATION (OIL OR GAS)
 GASOLINE OR FILLING STATION (GENERAL)
 SEASONAL INDUSTRY (SUMMER OR WINTER ONLY)
 ROAD STAND FARM PRODUCE SALES
 WAREHOUSE (GENERAL)
 GREENHOUSE
 GRAVEL PIT
 QUARRY
 MILL OR OVEN
 WATER POWERED MILL
 STOCK YARD OR LOADING PEN

EDUCATIONAL AND CORRECTIONAL INSTITUTIONS

SCHOOLHOUSE OR LARGE SCHOOL
 OTHER EDUCATIONAL INSTITUTIONS
 COLLEGE
 MUSEUM
 TOWN HALL, GRANGE OR COMMUNITY HALL
 ZOOLOGICAL GARDEN
 COUNTY PRISON FARM
 COUNTY FARM
 CORRECTIONAL INSTITUTION

PUBLIC SERVICE FACILITIES

POST OFFICE
 STATE HIGHWAY GARAGE
 POLICE STATION
 FIRE ENGINE HOUSE
 GARBAGE OR RUBBER CAMP
 SEWAGE DISPOSAL PLANT
 INCINERATOR
 WATER SUPPLY STAND PIPE
 POWER PLANT
 POWER SUBSTATION
 FILTER PLANT
 RADIO STATION (OFFICIAL LETTERS)
 RADIO STATION (GENERAL LETTERS)

CONSERVATION OR RECREATION

PICNIC GROUND
 PLAYGROUND, ATHLETIC FIELD, ETC.
 BATHING BEACH OR SWIMMING POOL
 SCENIC SITE
 CAMP SITE
 TOURIST COURT OR MOTEL
 CAMP OR LODGE
 SMALL DAM (UNLESS SPECIALLY MARKED)
 ROADSIDE SPRING
 GOLF HOUSE OR GOLF HOUSE
 TOURIST MARKET BAYON
 GUARD OR RANGER STATION
 OBSERVATION OR LOOKOUT TOWER
 PROMINENT PEAK AND LOOKOUT TOWER
 FISH HATCHERY
 RIFLE CLUB
 GOLF GROUND OR COUNTRY CLUB
 POLO GROUNDS
 RACING ACADemy
 AMUSEMENT PARK OR HALL
 FAIRGROUNDS, RACE COURSE, SPEEDWAY
 DRIVE-IN THEATRE
 STATE PARK, RECREATION AREA, HISTORIC SITE

MISCELLANEOUS MAP FEATURES-NATURAL FEATURES

ANISOT
 ARSENAL
 TRANSLATION STATION
 FORT, ARMY CAMP OR BARRACKS
 BRICK MARK
 LATITUDE AND LONGITUDE LINE
 PROMINENT ELEVATION WITH NAME
 SINK OR DEPRESSION

AIRWAYS AND AIRPORTS

MILITARY FIELD
 AIRPORT (COMPLETE FACILITIES) (UNLESS SPECIALLY MARKED)
 AIRFIELD, LIMITED FACILITIES
 LANDING AREA OR STRIP (UNLESS SPECIALLY MARKED)
 AIRWAY LIGHT BEACON (GENERAL)
 SEAPLANE BASE, MILITARY
 SEAPLANE BASE, CIVIL
 AIRPORT (GENERAL)

RAILROADS

RAILROAD
 RAILROAD, NARROW GAUGE
 ELECTRIC RAILROAD OR SUBURBAN RAILROAD
 RAILROAD ABANDONED TRACK RETAINED
 RAILROAD STATION
 RAILROAD GRADE CROSSING
 RAILROAD BRIDGE
 RAILROAD BELOW

NAVIGATION AND DRAINAGE

SHIP AND BARGE LINES ON NATURAL STREAMS
 DOCK, PIER OR LANDING
 FREE FERRY AND TOLL FERRY
 NAVIGABLE STREAM (UNLESS SPECIALLY MARKED)
 NAVIGABLE STREAM (WITH FERRY AND LANDING)
 HEAD OF NAVIGATION (UNLESS SPECIALLY MARKED)
 CANAL
 MANICURED CANAL
 DAM WITH LOCK
 UNMANNED STREAM
 DAM
 WIDE STREAM
 DAM WITH ROAD
 LAKE, RESERVOIR OR POND
 LAKE, RESERVOIR OR POND WITH DAM
 MARSH OR SWAMP LAND

BOUNDARIES

STATE LINE
 COUNTY LINE
 TOWNSHIP LINE
 CORPORATE LINE
 UNINCORPORATED CONTRACT LINE
 UNINCORPORATED TOWN LINE
 STATE GAME REFUGE LINE
 STATE GAME LAND LINE
 STATE FOREST LAND LINE
 OTHER STATE OR FEDERAL PUBLIC LAND LINE
 OTHER STATE OR FEDERAL PUBLIC LAND LINE

CITY, BOROUGH OR VILLAGE CENTERS

STATE CAPITAL
 COUNTY SEAT
 OTHER CITIES AND VILLAGES
 INCORPORATED CITIES OR BOROUGHS
 UNINCORPORATED URBAN CONTRACT

STRUCTURES

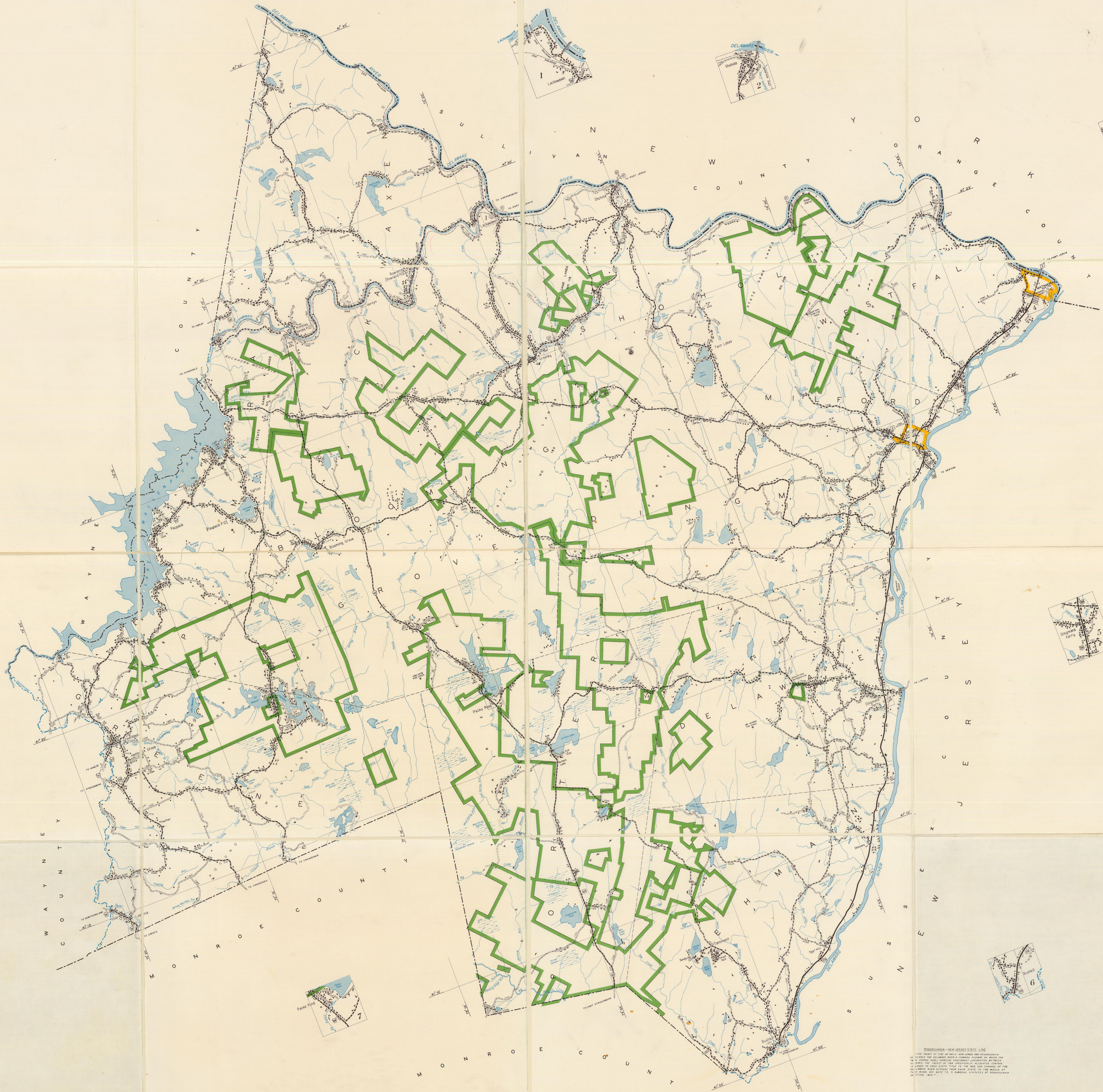
HIGHWAY BRIDGE (OVER 10 FEET HIGH)
 SMALL BRIDGE (CLOSELY SPACED)
 COVERED BRIDGE
 DRAWBRIDGE
 SUSPENSION
 ARCH
 TRUSS OR GIRDER
 CANTILEVER BRIDGE
 HIGHWAY GRADE SEPARATION
 DAM WITH ROAD
 HIGHWAY TUNNEL
 LEVEE OR DIKE WITH ROAD
 FORD-ROAD ESTABLISHMENT
 OVERHEAD INDUSTRIAL STRUCTURE

ROADS AND ROADWAY FEATURES

FEDERAL AID PRIMARY HIGHWAY SYSTEM
 FEDERAL AID SECONDARY HIGHWAY SYSTEM
 INTERSTATE HIGHWAY SYSTEM
 TRAFFIC CIRCLE
 U.S. TRAFFIC ROUTE NUMBER
 PENNSYLVANIA TRAFFIC ROUTE NUMBER
 PENNSYLVANIA LOGICATIVE ROUTE NOS.
 PENNSYLVANIA TOWNSHIP ROUTE NUMBER
 POINTS BETWEEN WHICH DISTANCES ARE

MEASURED INDICATED THIS

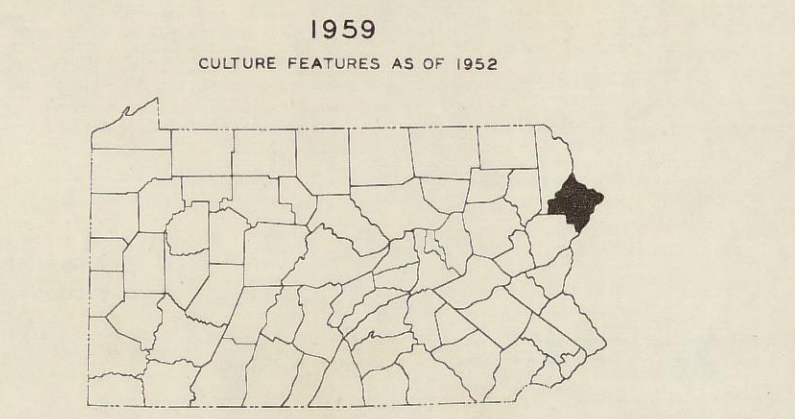
SIDE ROAD AND STREET IN UNINCORPORATED
 URBAN CONTRACTS AND EXTENSIONS OF LOCAL
 ROADS WITHIN MUNICIPALITIES
 IMPASSABLE ROAD
 PRIVATE ROAD
 UNIMPROVED ROAD
 GRAVEL OR GRAVEL ROAD
 BITUMINOUS ROAD (LOW TYPE)
 BITUMINOUS ROAD (HIGH TYPE)
 CONCRETE OR BRICK ROAD
 DIVIDED HIGHWAY
 HIGHWAY WITH FULL CONTROL OF ACCESS
 HIGHWAY WITH PARTIAL CONTROL OF ACCESS



GENERAL HIGHWAY MAP PIKE COUNTY PENNSYLVANIA

PREPARED BY THE
PENNSYLVANIA DEPARTMENT OF HIGHWAYS
IN CO-OPERATION WITH THE
BUREAU OF PUBLIC ROADS
U.S. DEPARTMENT OF COMMERCE
STATE-WIDE HIGHWAY PLANNING SURVEY

MAP SCALE
ENLARGEMENT SCALE
1959
CULTURE FEATURES AS OF 1958



POPULATION OF COUNTY - 1950 CENSUS 8,425
AREA OF COUNTY - 245 SQUARE MILES

POLYCONIC PROJECTION

COPYRIGHT - BUREAU OF PUBLICATION, DEPARTMENT OF COMMERCE AND SUPPLIES
OF THE GOVERNMENT OF PENNSYLVANIA