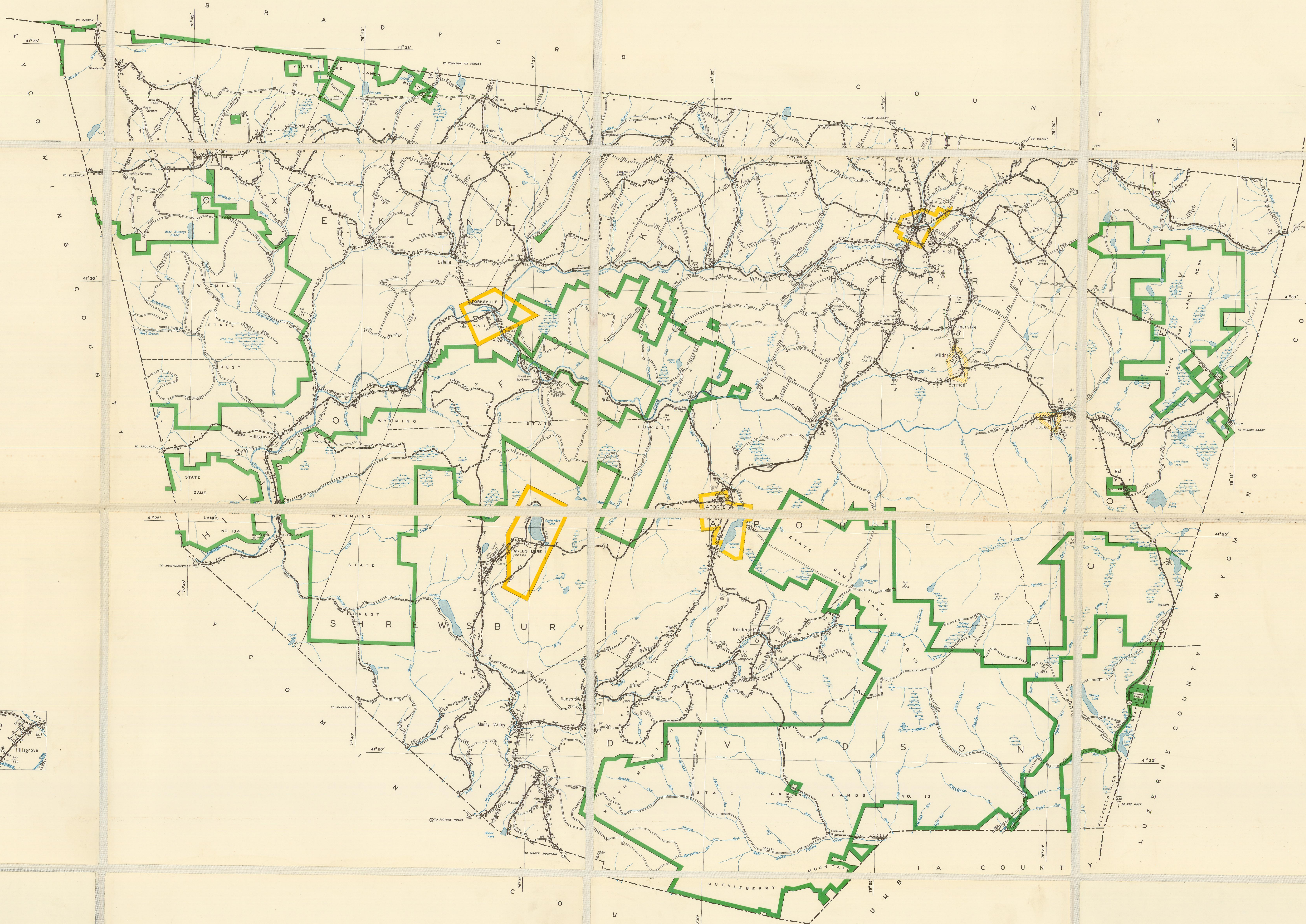


LEGEND

FARM UNITS, DWELLINGS, ETC.	
FARM UNIT (FROM CENTER OF LOT)	•
DWELLING (FROM CENTER OF LOT)	•
HOUSE OR GROUP OF DWELLINGS (FROM CENTER OF LOT)	•
CONVENT DWELLING AND STORE	•
DWELLING AND POST OFFICE	•
DWELLING, BUSINESS AND POST OFFICE	•
DWELLING, BUSINESS AND FILLING STATION	•
DWELLING, FILLING STATION AND POST OFFICE	•
DWELLING, BUSINESS, FILLING STATION AND POST OFFICE	•
TRAVELER'S HOUSE	•
BARBERSHOP OR DORMITORY	•
SEASONAL OR SUMMER COUNTRY DWELLING	•
SEASONAL DWELLING CLOSELY SPACED	•
HOTEL, OR HOTEL-RESIDUAL INSTITUTION	•
CHURCH OR OTHER RELIGIOUS INSTITUTION	•
CHURCH AND SCHOOL (LOW 100)	•
COUNTRY	•
CHURCH WITH CEMETERY ADJACENT	•
FRESH AIR PARK OR REST HOME	•
HOSPITAL	•
TOLL HOUSE	•
WATER STORAGE OR FIRE PROTECTION	•
GROUP OF UNDEVELOPED FEATURES	•
INDUSTRIAL	
STORE OR SMALL BUSINESS ESTABLISHMENT	•
BUSINESS AND POST OFFICE	•
BUSINESS AND FILLING STATION	•
BUSINESS, FILLING STATION AND POST OFFICE	•
FACTORY OR INDUSTRIAL PLANT	•
SAMMILL	•
MINE, SHAFT OR DRIFT	•
OIL OR GAS WELL	•
GAS TANK	•
FILLING STATION (NOT CONNECTED WITH OTHER BUSINESS)	•
DRIVING MOTOR (NOT CONNECTED WITH OTHER BUSINESS)	•
GAUGING OR PUMPING STATION (SMALL)	•
SEASONAL INDUSTRY (SUMMER OR FALL, LEASE HALL)	•
WAREHOUSE (SMALL)	•
WAREHOUSE (LARGE)	•
GREENHOUSE	•
NUMBERS	•
QUARRY	•
WATER POWERED MILL	•
STEEL WARE OR LADING PEN	•
EDUCATIONAL AND CORRECTIONAL INSTITUTIONS	
SCHOOLHOUSE	•
CONSULTATION OR LARGE SCHOOL	•
OTHER EDUCATIONAL INSTITUTIONS	•
PUBLIC LIBRARY	•
MUSEUM	•
TOWN HALL, GRANGE OR COMMUNITY HALL	•
COLLEGE, GYMNASIUM	•
COUNTY PRISON FARM	•
PUBLIC SERVICE FACILITIES	
POST OFFICE	•
STATE HIGHWAY GARAGE	•
FIRE ENGINE HOUSE	•
GARAGE OR RUBBER DUMP	•
SCIENCE OBSERVATORY PLANT	•
INCINERATOR	•
WATER SUPPLY STAND PIPE	•
POWER PLANT	•
POWER SUBSTATION	•
FILTER PLANT	•
RADIO STATION (WITH CALL LETTERS)	•
RADIO RANGE STATION	•
CONSERVATION OR RECREATION	
PICNIC GROUND	•
PLAYGROUND, ATHLETIC FIELD, ETC.	•
BATHING BEACH OR SWIMMING POOL	•
SCENIC SITE	•
CAMP SITE	•
TOURIST COURT OR MOTEL	•
CAMP OR LODGE	•
SMALL PARK (SMALLER THAN COUNTY OR NATIONAL, NOT MAINTAINED)	•
ROADSIDE SPRING	•
GUIDE HOUSE OR GATE HOUSE	•
FOREST BANGERS STATION	•
GUARD OR RANGER STATION	•
OBSERVATION OR LOOKOUT TOWER	•
PICTURE VIEW AND LOOKOUT TOWER	•
FISH HATCHERY	•
BIG CLUB	•
GOLF GROUND OR COUNTRY CLUB	•
WOLF GROUND	•
RIDING ACADEMY	•
AMUSEMENT PARK OR HALL	•
FAIRGROUND, RACE COURSE, SKEWYARD	•
DRIVE-IN THEATRE	•
STATE PARK, RECREATION AREA, HISTORIC SITE	•
MISCELLANEOUS MAP FEATURES-NATURAL FEATURES	
ARMORY	•
TRANSLATION STATION	•
FORE ARMY CAMP OR BARRACKS	•
BEACH PARK	•
LATITUDE AND LONGITUDE LINE	•
PROMINENT ELEVATION WITH NAME	•
SHIP OR DEPRESSION	•
AIRWAYS AND AIRPORTS	
MILITARY FIELD	•
AIRFIELD LIMITED FACILITIES (COMMERCIAL OR MARITIME)	•
AIRFIELD COMPLETE FACILITIES (COMMERCIAL OR MARITIME)	•
LANDING AREA OR STRIP (EXCLUDING PRIVATE AIRFIELD)	•
ARMY AIRFIELD (COMMERCIAL)	•
SEAPLANE BASE, MILITARY	•
SEAPLANE BASE, CIVIL	•
AIRPORT (GENERAL)	•
RAILROADS	
RAILROAD VARIETY GAGE	•
ELECTRIC INTERURBAN OR SUBURBAN RAILROAD	•
RAILROAD BRANCHING TRACK RETAINED	•
RAILROAD STATION	•
RAILROAD GRADE CROSSING	•
RAILROAD ABOVE	•
RAILROAD BELOW	•
NAVIGATION AND DRAINAGE	
SHIP AND BARGE CANALS ON NATURAL STREAMS	•
SHIP AND BARGE CANALS ON ARTIFICIAL STREAMS	•
FREE FERRY AND TOLL FERRY	•
MOVABLE STREAM (TOWNSHIP ROAD)	•
NAVIGABLE STREAM (WITH DAM AND LOCK)	•
HEAD OF NAVIGATION (TOWNSHIP ROAD)	•
HEAD OF NAVIGATION (CANAL)	•
CANAL	•
ABANDONED CANAL	•
DAM WITH LOCK	•
INTERMITTENT STREAM	•
NARROW STREAM	•
WIDE STREAM	•
WIDE STREAM WITH DAM	•
LARGE RESERVOIR OR FLOOD LAKE, RESERVOIR, OR FLOOD LAKE	•
MARKET OR DAMP LAND	•
BOUNDARIES	
STATE LINE	•
COUNTY LINE	•
TOWNSHIP LINE	•
CORPORATE LINE	•
UNINCORPORATED TOWNSHIP LINE	•
ENLARGEMENT INSET LINE	•
STATE GAME RESERVE LINE	•
STATE GAME LAND LINE	•
STATE FOREST LAND LINE	•
OTHER STATE OR FEDERAL PUBLIC LAND LINE	•
CITY, BOROUGH OR VILLAGE CENTERS	
STATE CAPITAL	•
CITY SEAT	•
OTHER CITIES AND VILLAGES	•
INCORPORATED CITIES OR BOROUGHS	•
UNINCORPORATED URBAN COMPACT	•
STRUCTURES	
HIGHWAY BRIDGE (OVER RIVER AND CREEK)	•
SMALL BRIDGE (CLOSELY SPACED)	•
COVERED BRIDGE	•
DRYBRIDGE	•
SUSPENSION	•
TRUSS OR GIRDER	•
CANTILEVER BRIDGE	•
HIGHWAY GRADE SEPARATION	•
DAM WITH ROAD	•
HIGHWAY TUNNEL	•
LEVEL OR DIRT WITH ROAD	•
FORE ROAD ESTABLISHED	•
OVERHEAD INDUSTRIAL STRUCTURE	•
ROADS AND ROADWAY FEATURES	
FEDERAL AND PRIMARY HIGHWAY SYSTEM	•
FEDERAL AND SECONDARY HIGHWAY SYSTEM	•
TRAFFIC CONCERNS	•
U.S. TRAFFIC ROUTE NUMBER	•
PENNSYLVANIA TRAFFIC ROUTE NUMBER	•
PENNSYLVANIA LEGISLATIVE ROUTE NUMBER	•
PENNSYLVANIA TOWNSHIP ROUTE NUMBER	•
POINTS BETWEEN WHICH DISTANCES ARE MEASURED INDICATED THIS	•
SIDE ROADS AND STREETS IN UNINCORPORATED AREAS	
ROADS WITHIN UNINCORPORATED AREAS	•
UNINCORPORATED ROAD	•
PRIVATE ROAD	•
UNIMPROVED ROAD	•
GRAVEL OR STONE ROAD	•
BITUMINOUS ROAD (LOW TRAFFIC)	•
BITUMINOUS ROAD (HIGH TRAFFIC)	•
CONCRETE OR BACK ROAD	•
DIVIDED HIGHWAY	•
HIGHWAY WITH FULL CONTROL OF ACCESS	•



GENERAL HIGHWAY MAP
SULLIVAN COUNTY
 PENNSYLVANIA

PREPARED BY THE
 PENNSYLVANIA DEPARTMENT OF HIGHWAYS
 IN COOPERATION WITH THE
 BUREAU OF PUBLIC ROADS
 U.S. DEPARTMENT OF COMMERCE
 DATA OBTAINED FROM
 STATE-WIDE HIGHWAY PLANNING SURVEY

SCALE
 ENLARGEMENT SCALE
 1962
 CULTURE FEATURES AS OF 1962

POPULATION OF COUNTY MAP
 1960 CENSUS 6,231
 AREA OF COUNTY 478 SQUARE MILES

POLYCONIC PROJECTION