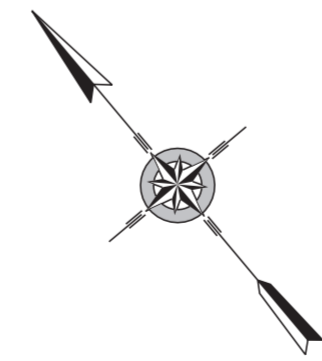
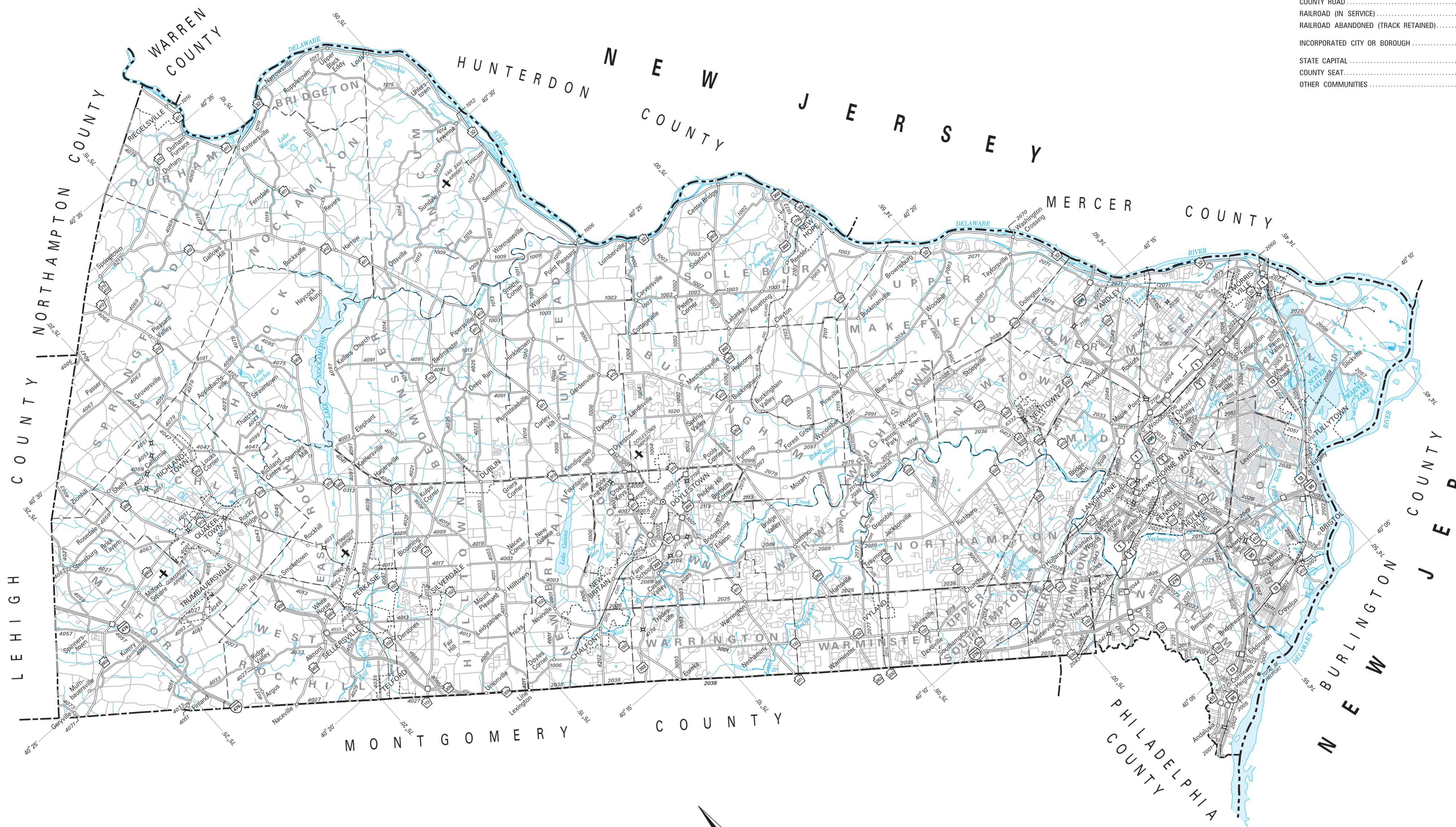


- EXPRESSWAY — ACCESS FULLY CONTROLLED
- TRAFFIC ROUTE
- REMAINING STATE ROAD AND IDENTIFIER
- STATE MAINTAINED BRIDGE
- TOWNSHIP / OTHER ROAD
- COUNTY ROAD
- RAILROAD (IN SERVICE)
- RAILROAD ABANDONED (TRACK RETAINED)
- INCORPORATED CITY OR BOROUGH
- STATE CAPITAL
- COUNTY SEAT
- OTHER COMMUNITIES

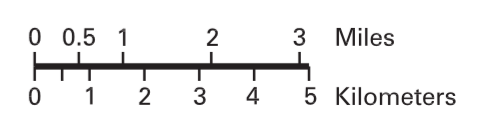


Printed on Recycled Paper

2023

TRAFFIC AND STATE ROUTE MAP
BUCKS COUNTY

PREPARED BY THE
PENNSYLVANIA DEPARTMENT OF TRANSPORTATION
BUREAU OF PLANNING AND RESEARCH
GEOGRAPHIC INFORMATION DIVISION
IN COOPERATION WITH THE
U.S. DEPARTMENT OF TRANSPORTATION
FEDERAL HIGHWAY ADMINISTRATION



COPIES OF THIS MAP ARE AVAILABLE AT NOMINAL COST
CONTACT:
PENNSYLVANIA DEPARTMENT OF TRANSPORTATION
SALES STORE
P.O. BOX 3451
HARRISBURG, PENNSYLVANIA 17105 - 3451
TELEPHONE: (717) 787 - 6746

USERS NOTING ERRORS OR OMISSIONS ON THIS MAP
ARE URGED TO REPORT THEM TO:
PENNSYLVANIA DEPARTMENT OF TRANSPORTATION
GEOGRAPHIC INFORMATION DIVISION
P.O. BOX 3555
HARRISBURG, PENNSYLVANIA 17105 - 3555
or
E-MAIL: ra-pennodtmaps@pa.gov