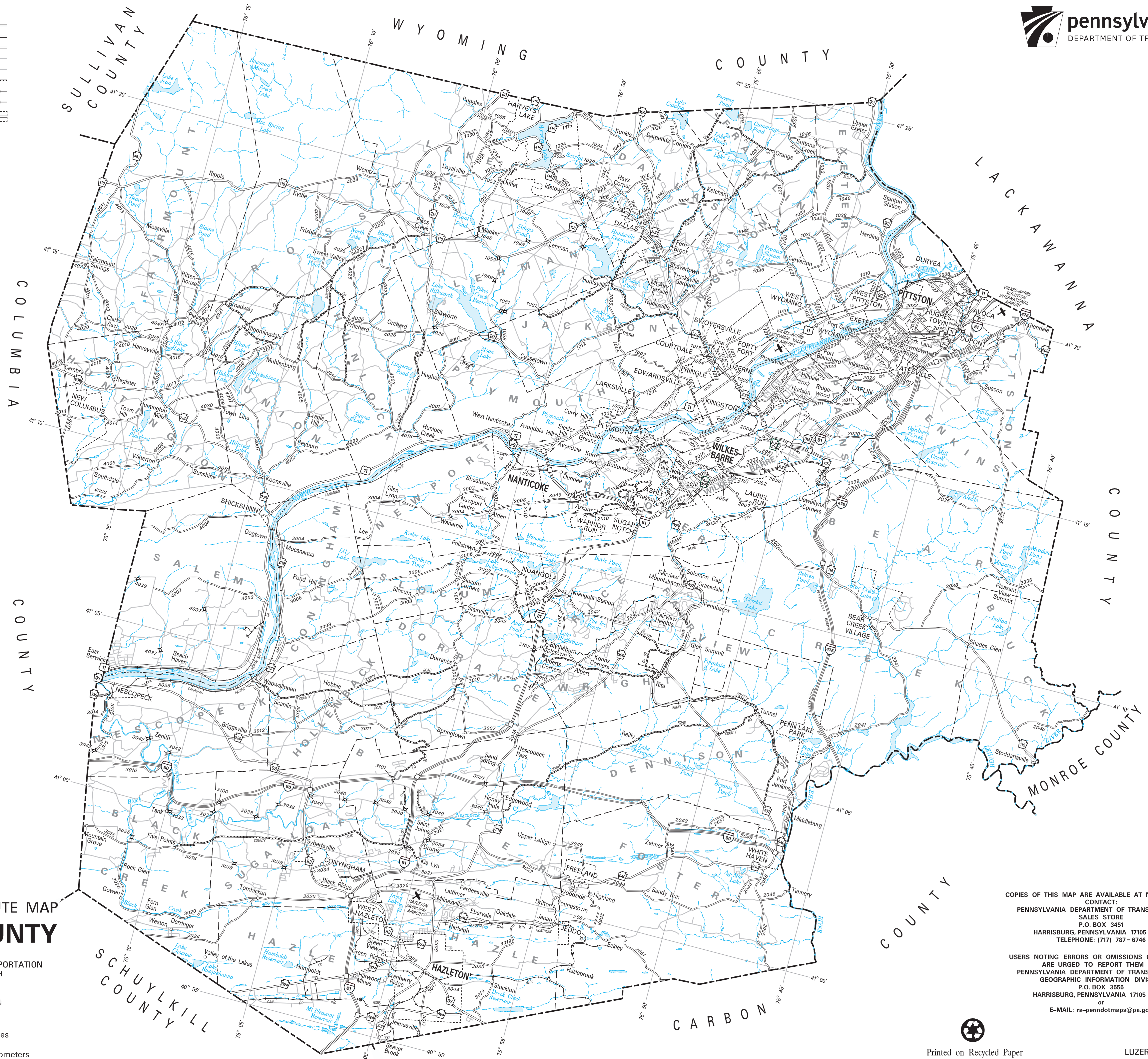


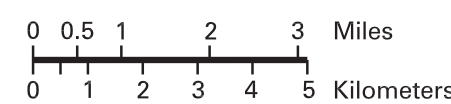
**LEGEND**

- EXPRESSWAY - ACCESS FULLY CONTROLLED .....
- TRAFFIC ROUTE .....
- REMAINING STATE ROAD AND IDENTIFIER .....
- STATE MAINTAINED BRIDGE .....
- TOWNSHIP / OTHER ROAD .....
- COUNTY ROAD .....
- RAILROAD (IN SERVICE) .....
- RAILROAD ABANDONED (TRACK RETAINED) .....
- INCORPORATED CITY OR BOROUGH .....
- STATE CAPITAL .....
- COUNTY SEAT .....
- OTHER COMMUNITIES .....



2023  
**TRAFFIC AND STATE ROUTE MAP**  
**LUZERNE COUNTY**

PREPARED BY THE  
PENNSYLVANIA DEPARTMENT OF TRANSPORTATION  
BUREAU OF PLANNING AND RESEARCH  
GEOGRAPHIC INFORMATION DIVISION  
IN COOPERATION WITH THE  
U.S. DEPARTMENT OF TRANSPORTATION  
FEDERAL HIGHWAY ADMINISTRATION



COPIES OF THIS MAP ARE AVAILABLE AT NOMINAL COST  
CONTACT:  
PENNSYLVANIA DEPARTMENT OF TRANSPORTATION  
SALES STORE  
P.O. BOX 3451  
HARRISBURG, PENNSYLVANIA 17105 - 3451  
TELEPHONE: (717) 787 - 6746

USERS NOTING ERRORS OR OMISSIONS ON THIS MAP  
ARE URGED TO REPORT THEM TO:  
PENNSYLVANIA DEPARTMENT OF TRANSPORTATION  
GEOGRAPHIC INFORMATION DIVISION  
P.O. BOX 3555  
HARRISBURG, PENNSYLVANIA 17105 - 3555  
or  
E-MAIL: [ra-pennodtmaps@pa.gov](mailto:ra-pennodtmaps@pa.gov)