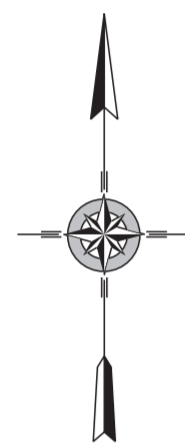
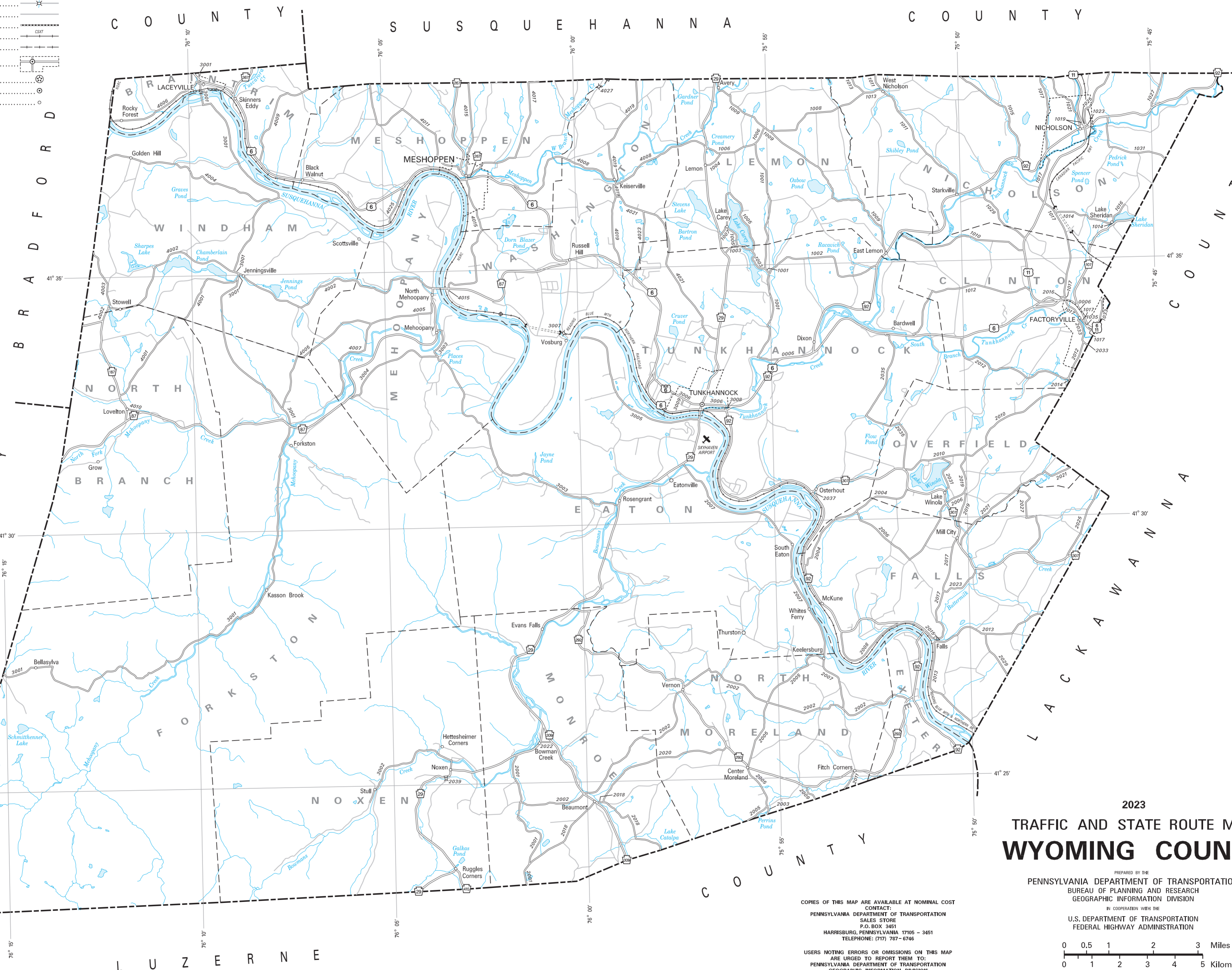


LEGEND

- EXPRESSWAY - ACCESS FULLY CONTROLLED
- TRAFFIC ROUTE
- REMAINING STATE ROAD AND IDENTIFIER
- STATE MAINTAINED BRIDGE
- TOWNSHIP / OTHER ROAD
- COUNTY ROAD
- RAILROAD (IN SERVICE)
- RAILROAD ABANDONED (TRACK RETAINED)
- INCORPORATED CITY OR BOROUGH
- STATE CAPITAL
- COUNTY SEAT
- OTHER COMMUNITIES



2023
TRAFFIC AND STATE ROUTE MAP
WYOMING COUNTY

COPIES OF THIS MAP ARE AVAILABLE AT NOMINAL COST
CONTACT:
PENNSYLVANIA DEPARTMENT OF TRANSPORTATION
SALES STORE
P.O. BOX 3451
HARRISBURG, PENNSYLVANIA 17105 - 3451
TELEPHONE: (717) 787-6746

USERS NOTING ERRORS OR OMISSIONS ON THIS MAP
ARE URGED TO REPORT THEM TO:
PENNSYLVANIA DEPARTMENT OF TRANSPORTATION
GEOGRAPHIC INFORMATION DIVISION
P.O. BOX 3555
HARRISBURG, PENNSYLVANIA 17105 - 3555
or
E-MAIL: ra-pennDOTmaps@pa.gov

PREPARED BY THE
PENNSYLVANIA DEPARTMENT OF TRANSPORTATION
BUREAU OF PLANNING AND RESEARCH
GEOGRAPHIC INFORMATION DIVISION

IN COOPERATION WITH THE
U.S. DEPARTMENT OF TRANSPORTATION
FEDERAL HIGHWAY ADMINISTRATION

0 0.5 1 2 3 Miles
0 1 2 3 4 5 Kilometers