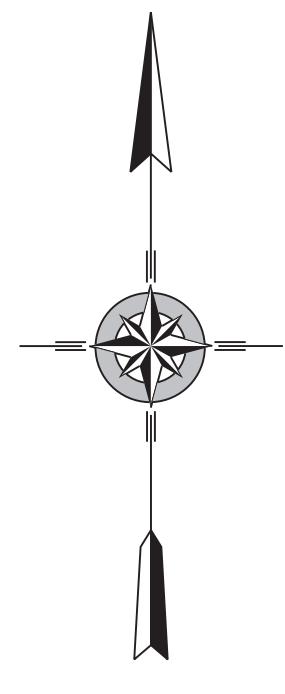
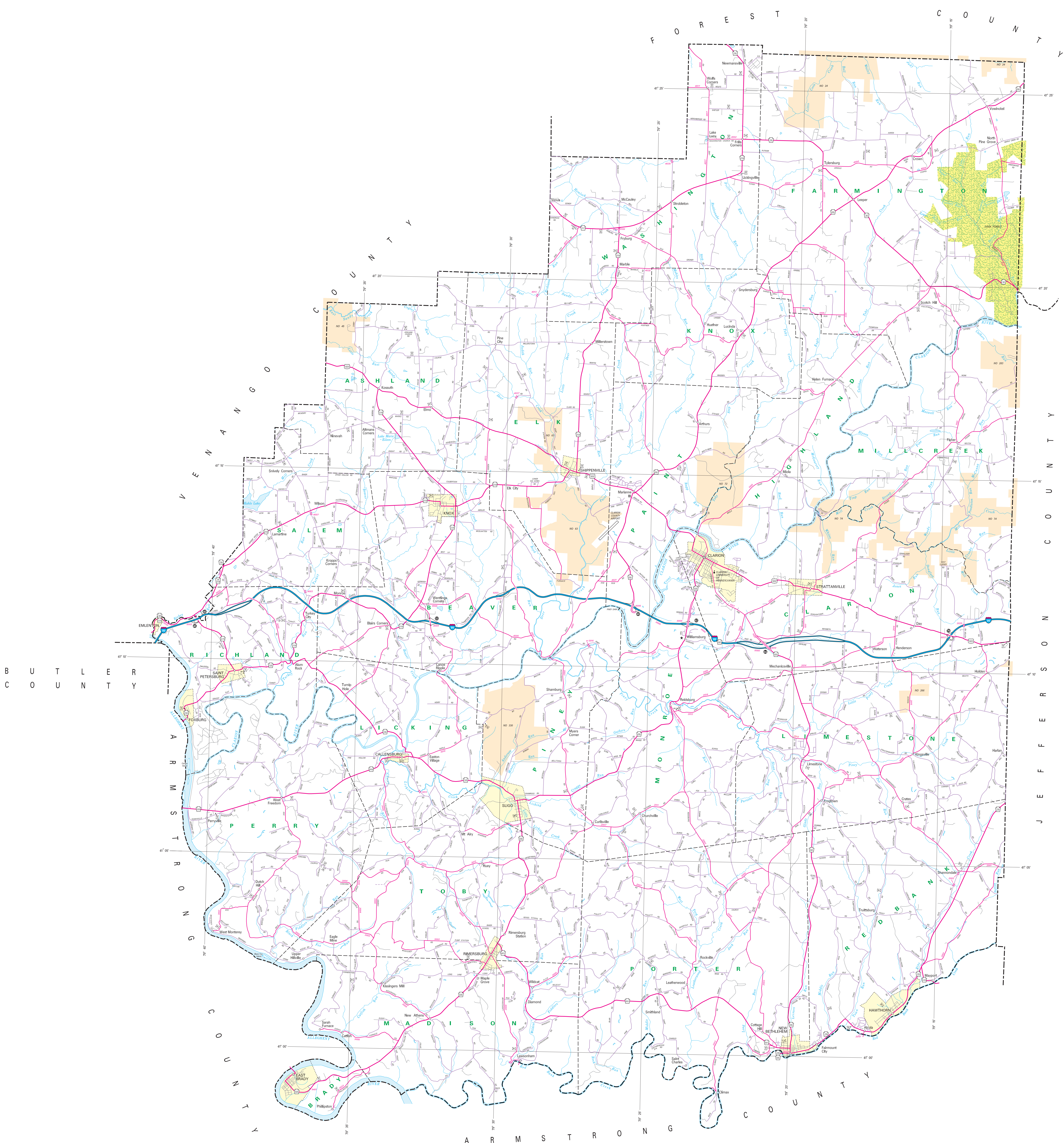
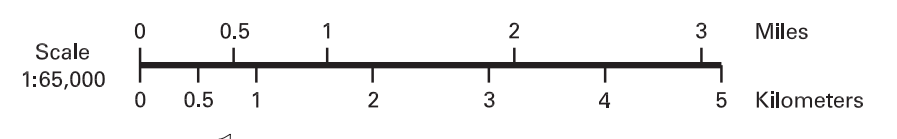


- LEGEND**
- FULLY CONTROLLED ACCESS HIGHWAY
 - MULTI-LANE HIGHWAY
 - TRUNK HIGHWAY
 - REMAINING STATE ROAD AND CENTERLINE
 - STATE MAINTAINED BRIDGE
 - TOWNSHIP ROAD
 - TOWNSHIP ROAD (PROMINENT UNIMPROVED)
 - OTHER ROAD
 - STATE HIGHWAY NUMBER
 - INTERSTATE TRAVEL ROUTE
 - UNITED STATES TRAVEL ROUTE
 - PENNSYLVANIA TRAVEL ROUTE
 - RAILROAD BY SERVICE
 - RAILROAD ABANDONED TRACK REMAINS
 - STATE LINE
 - COUNTY LINE
 - TOWNSHIP LINE
 - INCORPORATED CITY
 - INCORPORATED BOROUGH
 - STATE CAPITAL
 - COUNTY SEAT
 - OTHER GOVERNMENTS
 - COLLEGE OR UNIVERSITY
 - STATE POLICE FACILITY
 - GENETIC CENTER
 - STATE ADMINISTERED HISTORIC PROPERTY
 - FEDERAL STATE INSTITUTION
 - POWERS FACILITY
 - PORTS OF SERVICE
 - HORSE RACE TRACK
 - HEMPHILL
 - RACE AREA AND COMFORT FACILITY
 - WELCOME CENTER AND COMFORT FACILITY
 - STATE FISH HATCHERY
 - STATE FOREST PLANTING AREA
 - FEDERAL WILDLIFE REFUGES
 - STATE PARK LAND - HEADQUARTERS
 - STATE GAME LAND AND NUMBER
 - STATE AND FEDERAL FOREST LAND
 - FEDERAL PARK, RECREATION LAND
 - FEDERAL RESERVATION



2025
GENERAL HIGHWAY MAP
CLARION COUNTY
PENNSYLVANIA

PREPARED BY THE
PENNSYLVANIA DEPARTMENT OF TRANSPORTATION
BUREAU OF PLANNING AND RESEARCH
GEOGRAPHIC INFORMATION DIVISION
IN COOPERATION WITH THE
U.S. DEPARTMENT OF TRANSPORTATION
FEDERAL HIGHWAY ADMINISTRATION



COPIES OF THIS MAP ARE AVAILABLE AT NOMINAL COST
CONTACT:
PENNSYLVANIA DEPARTMENT OF TRANSPORTATION
SALES STORE
HARRISBURG, PENNSYLVANIA 17105 - 3451
TELEPHONE: (717) 767-6266

USERS NOTING ERRORS OR OMISSIONS ON THIS MAP
ARE URGED TO REPORT THEM TO:
PENNSYLVANIA DEPARTMENT OF TRANSPORTATION
BUREAU OF PLANNING & RESEARCH
GEOGRAPHIC INFORMATION DIVISION
400 NORTH STREET
HARRISBURG, PENNSYLVANIA 17120
E-MAIL: rspe@dmv.state.pa.gov