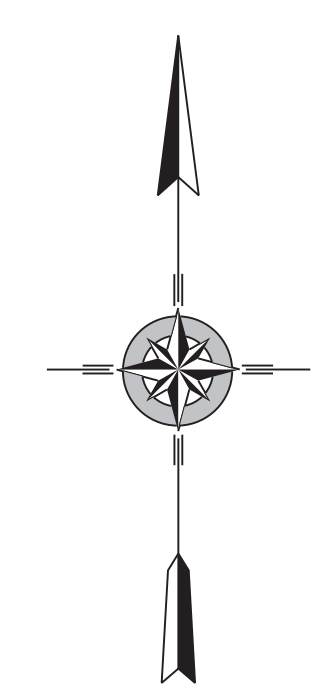
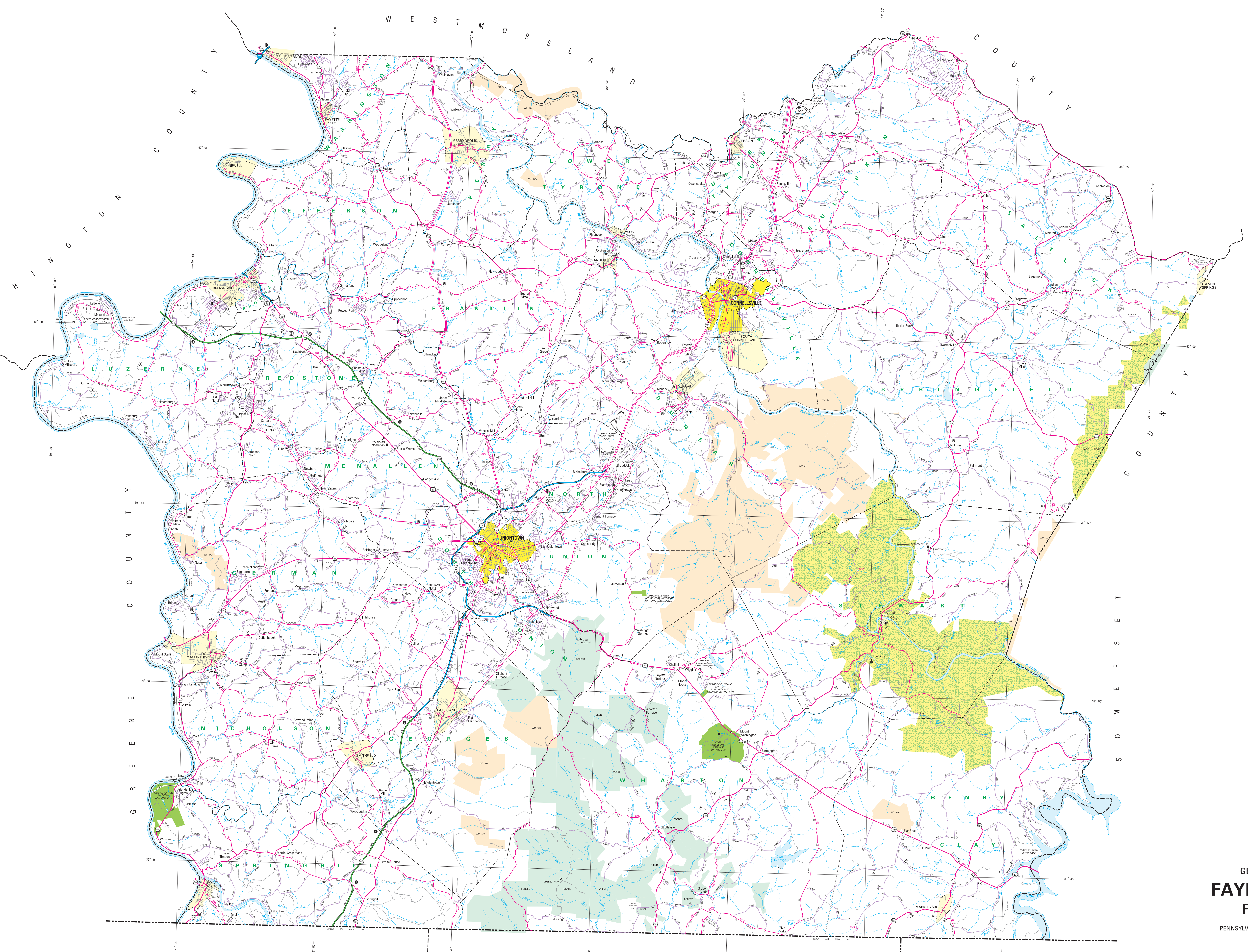


LEGEND

- FULLY CONTROLLED ACCESS HIGHWAY
- MULTILANE HIGHWAY
- TRUNK ROAD
- REMAINING STATE ROAD AND EQUIVALENT
- STATE MAINTAINED BRIDGE
- TOWNSHIP ROAD
- TOWNSHIP ROAD (PRAIRIE UNIMPROVED)
- STATE ROAD (PRAIRIE UNIMPROVED)
- INTERSTATE INTERCHANGE NUMBER
- INTERSTATE TRAFFIC ROUTE
- UNITED STATES TRAFFIC ROUTE
- PENNSYLVANIA TRAFFIC ROUTE
- RAILROAD (BY SERVICE)
- RAILROAD MAINTAINED TRACK (RETAINED)
- STATE LINE
- COUNTY LINE
- TOWNSHIP LINE
- INCORPORATED CITY
- INCORPORATED BOROUGH
- STATE CAPITAL
- COUNTY SEAT
- OTHER GOVERNMENTS
- COLLEGE OF UNIVERSITY
- STATE POLICE HEADQUARTERS
- EMERGENCY
- STATE ADJUTANT GENERAL PROPERTY
- FEDERAL STATE INSTITUTION
- POWERS OF SERVICE
- HORSE RACE TRACK
- HOSPITAL
- RECREATION AREA AND COMFORT FACILITY
- WELCOME CENTER AND COMFORT FACILITY
- STATE FISH MARKET
- STATE FOREST NURSERY AREA
- STATE FOREST POND AREA
- FEDERAL WOODLAND USE
- STATE PARK LAND - HEADQUARTERS
- STATE GAME LAND AND HUNTER
- STATE AND FEDERAL FOREST LAND
- FEDERAL PARK / RECREATION LAND
- FEDERAL RESERVATION



2025  
**GENERAL HIGHWAY MAP**  
**FAYETTE COUNTY**  
**PENNSYLVANIA**

PREPARED BY THE  
**PENNSYLVANIA DEPARTMENT OF TRANSPORTATION**  
 GEOGRAPHIC INFORMATION DIVISION  
 IN COOPERATION WITH THE  
 U.S. DEPARTMENT OF TRANSPORTATION  
 FEDERAL HIGHWAY ADMINISTRATION

COPIES OF THIS MAP ARE AVAILABLE AT NOMINAL COST  
 CONTACT:  
 PENNSYLVANIA DEPARTMENT OF TRANSPORTATION  
 BUREAU OF PLANNING & RESEARCH  
 GEOGRAPHIC INFORMATION DIVISION  
 HARRISBURG, PENNSYLVANIA 17104 - 3451  
 TELEPHONE: (717) 737-4746

USERS NOTING ERRORS OR OMISSIONS ON THIS MAP  
 ARE URGED TO REPORT THEM TO:  
 PENNSYLVANIA DEPARTMENT OF TRANSPORTATION  
 BUREAU OF PLANNING & RESEARCH  
 GEOGRAPHIC INFORMATION DIVISION  
 HARRISBURG, PENNSYLVANIA 17104 - 3451  
 TELEPHONE: (717) 737-4746  
 FAX: (717) 737-4746  
 E-MAIL: gis@penndot.gov

POPULATION OF COUNTY (2000 Census) 158,894  
 AREA OF COUNTY (SQ. MI.) 1,046  
 POLYCONIC PROJECTION - NAD 83 DATUM

